



LIGHTHOUSE IMAGING

This is not the time
to learn about a
faulty endoscope.

EndoBench™

Test and report the image
quality of endoscopes
quickly, simply, and
accurately.

EndoBench, the updated and
improved endoscope measurement
device from Lighthouse Imaging,
is designed to be simple to use,
yet have enough versatility to allow
measurement and report generation
on a wide variety of scopes.



Because precision
is everything

EndoBench is a portable test system that accurately measures the optical specifications and performance of endoscopes. It automatically tests the endoscope characteristics that are important to the surgeon such as image sharpness and uniformity, field of view, and distortion. The instrument consists of a custom designed opto-mechanical system and software to evaluate and report the parameters that are central to a clinical environment. Adapters and fixtures are included for measuring rigid, flexible and video endoscopes.

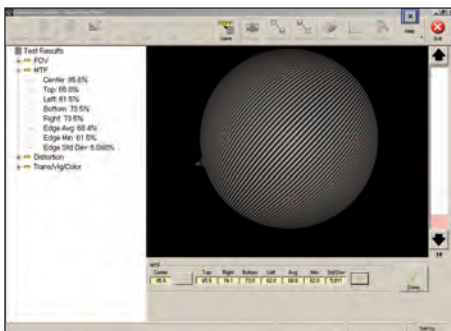


Adjusts endoscope direction-of-view and field-of-view easily and accurately.

EndoBench™

EndoBench improves the quality of endoscopes by:

- Verifying the performance of repaired endoscopes
- Reducing unnecessary repairs
- Determining baseline image specifications of new endoscopes
- Tracking scope image quality as a function of time for preventive maintenance



Measures and documents endoscope image quality automatically.



Sets up measurements quickly with included high resolution targets and precision positioner.

Specifications		
Diameters	Lengths	Angles of view
2 - 16 mm	60 - 450 mm	50° - 140° Field of view 0° -70° Direction of view
Endoscope types that can be tested		
Rigid endoscopes (laparoscopes, arthroscopes, etc.), flexible fiberoptic endoscopes, video endoscopes (with VCR/NTSC output)		
Available measurements		
MTF (image sharpness), image optics transmission and uniformity, coloration, distortion, real and apparent field of view, direction of view		

We set a higher standard.

Lighthouse Imaging Corporation has developed endoscopic equipment for leading manufacturers and hospitals since 1984. We are an award-winning provider of optical engineering and design services for the medical device industry with more than 15 patents issued. Our NIST-traceable test equipment is manufactured in the United States at our ISO 9001/13485 certified facility.

Please contact us so we can help you simplify your endoscope testing.

Distributed by:
MRE Dynatech NV LLC
PO Box 2458
Carson City, NV 89702

Tel: 775-888-2032
Fax: 775-227-4223
www.mredynatech.com



LIGHTHOUSE IMAGING

477 Congress St., Portland, Maine 04101

Ph. 207.253.5350 • Fax 207.253.5603 • info@lighthouseoptics.com

www.endobench.info

